

Manual eduroam For Microsoft Windows

1. Open your browser and enter the following URL: <https://cat.eduroam.org>
2. The welcome page will appear on your browser as shown in Figure 1. Click “download your eduroam installer”.

Welcome to eduroam CAT
eduroam Configuration Assistant Tool

View this page in [Български](#) [Català](#) [Čeština](#) [Deutsch](#) [Ελληνικά](#) [English\(GB\)](#) [Español](#) [Euskara](#) [Français](#) [Galego](#) [Hrvatski](#) [Italiano](#) [lietuvių](#) [Norsk](#) [Polski](#) [Slovenščina](#) [Srpski](#) [Suomi](#) [Maqvar](#) [Português](#) [Slovenčina](#) [Start page](#)

About eduroam

[About eduroam CAT](#)
[Terms of use](#)
[FAQ](#)
[Report a problem](#)
[Become a CAT developer](#)

[eduroam admin: manage your IdP](#)

eduroam installation made easy:
MS Windows
10, 8, 7, Vista

Custom built for your home institution

Digitally signed by the organisation that coordinates eduroam: GÉANT Association

eduroam installer for University of Samplecity

Welcome to the eduroam installer

This installer has been prepared for University of Samplecity. The installer will create the following wireless profiles: eduroam (TKIP), eduroam.

The non TKIP profile is preferred. Always use it if you have a choice.

More information and comments:
EMAIL: eduroam@samplecity.xx
WWW: <http://eduroam.samplecity.xx>

Installer created with software from the GEANT project.

<http://cat.eduroam.org>

Next > Cancel

eduroam user:
download your eduroam installer

eduroam CAT - Release CAT-1.1.4 © 2011-15 GÉANT on behalf of the GN3, GN3plus, GN4 consortia and others [Full Copyright and Licenses](#) [Cookie Policy](#)

GEANT European Commission Communications Networks, Content and Technology

Figure 1

3. A list of institutions will be prompted to you, once you click the download link. The list of institutions is sort by the nearest institution where your computer is connected.
4. Look for your institution. If your institution is not on the list, you might want to use the search text box to find your institution. For Warga USM, please look for Universiti Sains Malaysia. Click the link button to proceed.

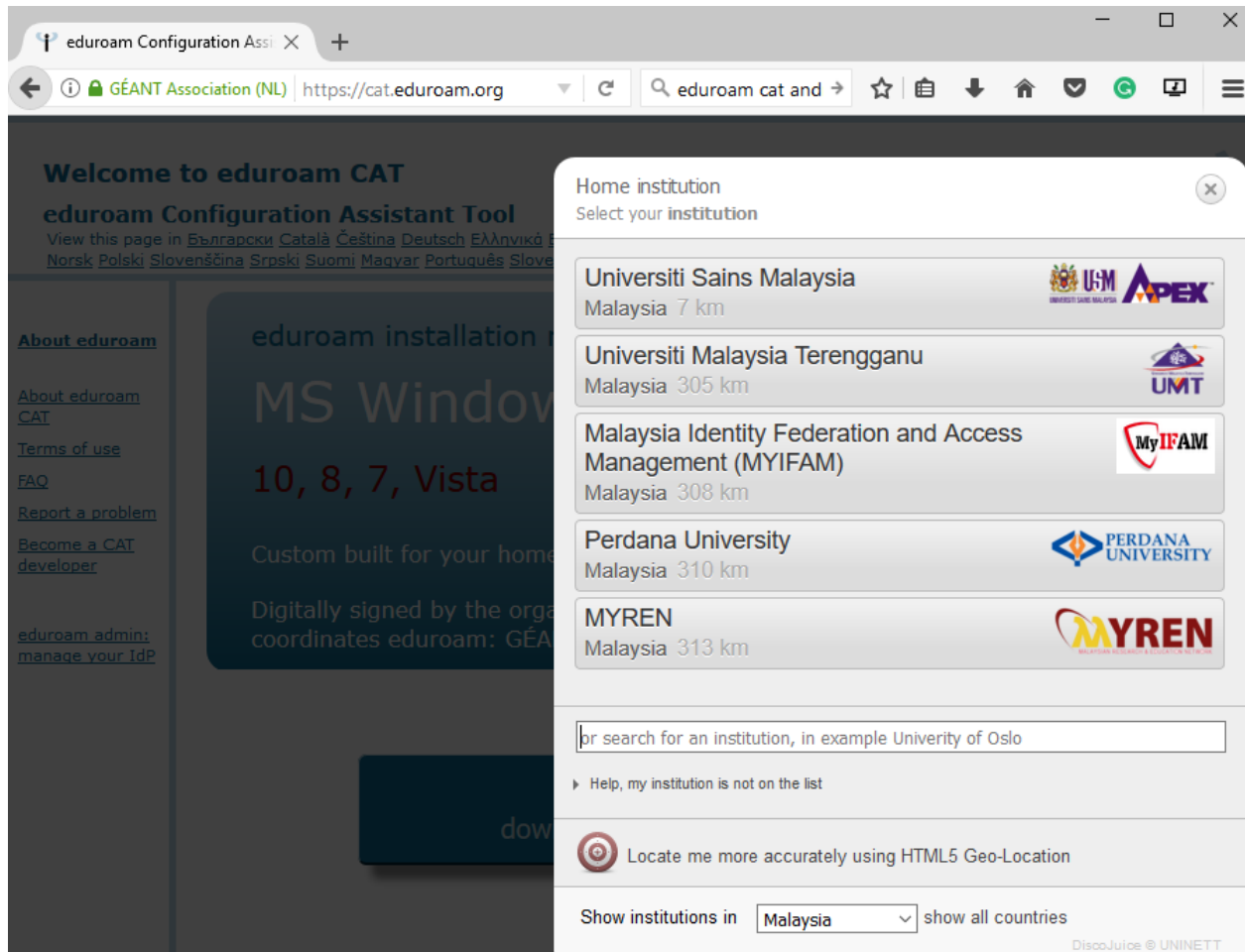


Figure 2

5. After clicking the button, you will be redirected to the download page base on your selected institution. This web will suggest the best configuration base on your operating system.

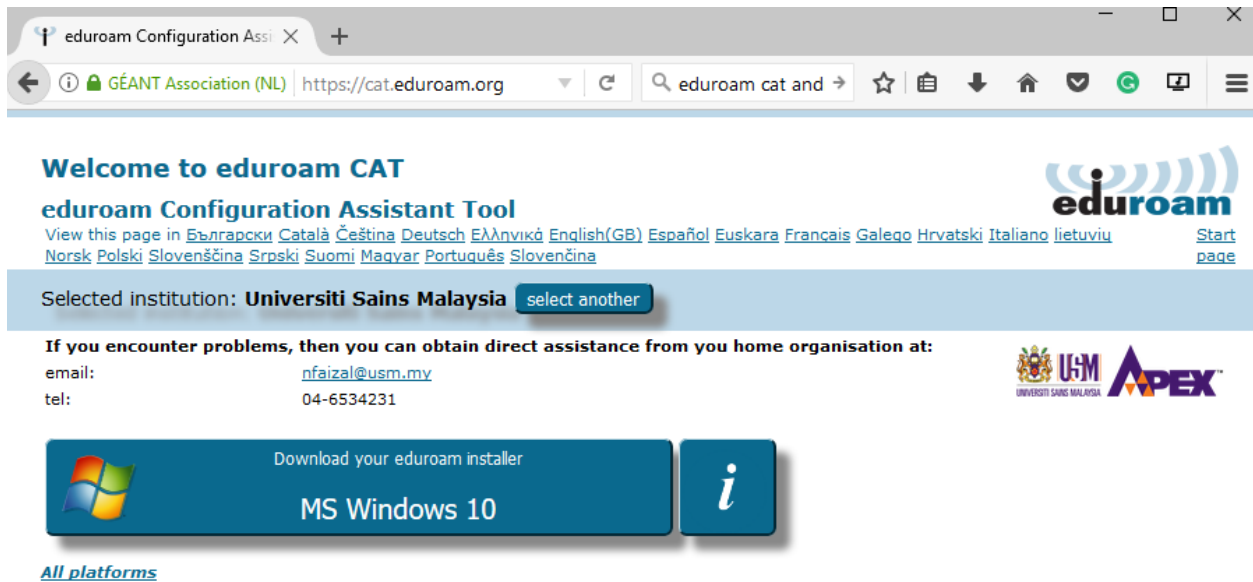


Figure 3

6. Click Download you eduroam installer. For this case, the web detects operating system running on Windows 10. You will be prompted to download a file as shown in Figure 5. Save and run the downloaded file.

[View this page in](#) [Български](#) [Català](#) [Čeština](#) [Deutsch](#) [Ελληνικά](#) [English\(GB\)](#) [Español](#) [Euskara](#) [Français](#) [Galego](#) [Hrvatski](#) [Italiano](#) [lietuvių](#) [Norsk](#) [Polski](#) [Slovenščina](#) [Srpski](#) [Suomi](#) [Maqyar](#) [Português](#) [Slovenčina](#) [Start page](#)

Selected institution: **Universiti Sains Malaysia** [select another](#)

If you encounter problems, then you can obtain direct assistance from your home organisation at:
 email: nfaizal@usm.my
 tel: 04-6534231

Welcome aboard the eduroam user community!
 Your download will start shortly. In case of problems with the automatic download please use this direct [link](#).
 Dear user from Universiti Sains Malaysia,
 we would like to warmly welcome you among the several million users of eduroam! From now on, you will be able to use internet access resources on thousands of universities, research centres and other places all over the globe. All of this completely free of charge!
 Now that you have downloaded and installed a client configurator, all you need to do is find an eduroam hotspot in your vicinity and enter your user credentials (this is our fancy name for 'username and password' or 'personal certificate') - and be online!
 Should you have any problems using this service, please always contact the helpdesk of Universiti Sains Malaysia. They will diagnose the problem and help you out. You can reach them via the means shown above.
[Back to downloads](#)

eduroam CAT - Release CAT-1.1.4 © 2011-15 GÉANT on behalf of the GN3, GN3plus, GN4 consortia and others [Full Copyright and Licenses](#) [Cookie Policy](#)

GÉANT European Commission Communications Networks, Content and Technology

Figure 4

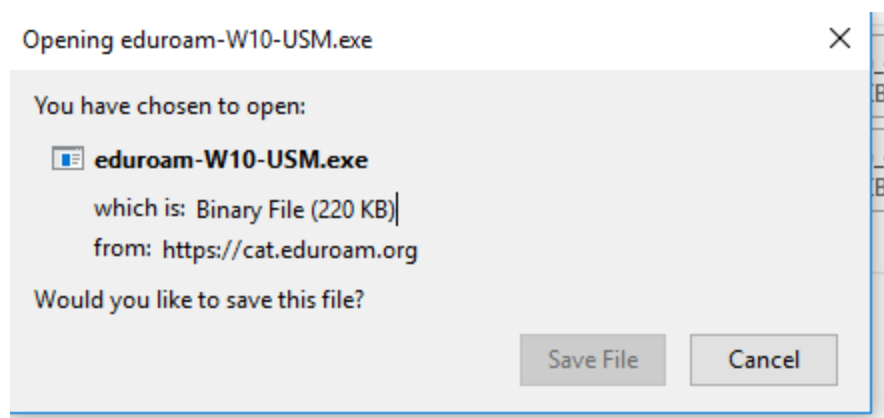


Figure 5

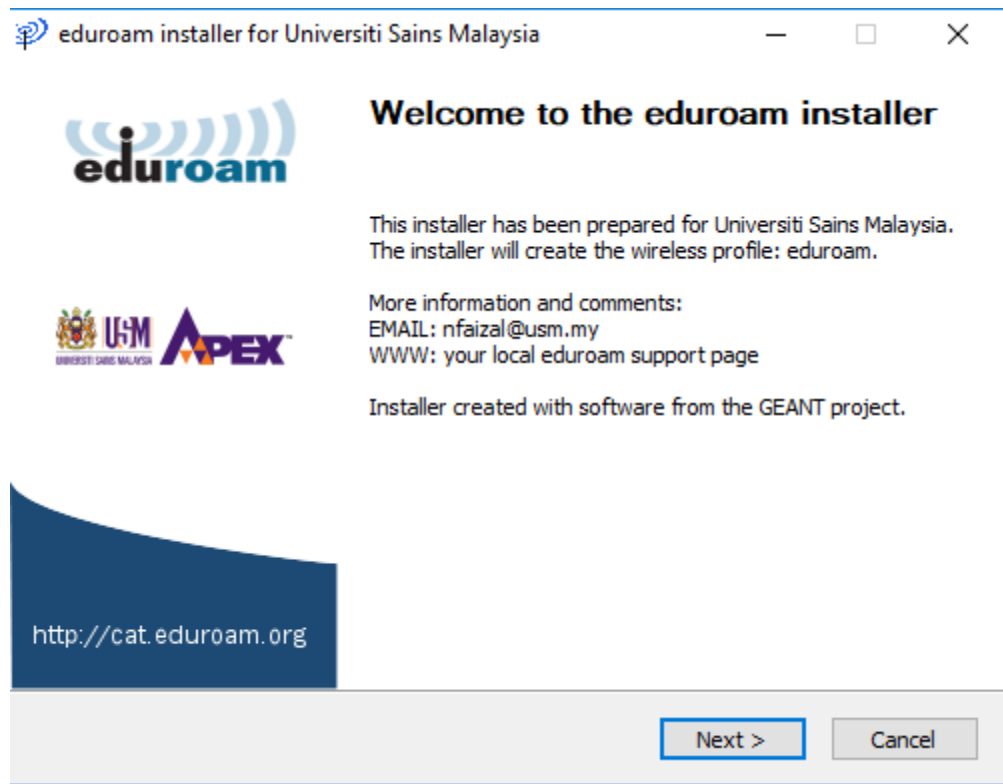


Figure 6

7. Figure 6 shows the first screen when run the downloaded file. Click Next.
8. You will be prompted a warning as shown in Figure 7. Please ensure on step 4, your chosen institution is your home institution before you download the file. Click OK to continue.
9. You will be asked to enter your username and password as depicted in Figure 8. For Warga USM, please enter you USM Identity and your password. Click Install to configure your wireless connection.

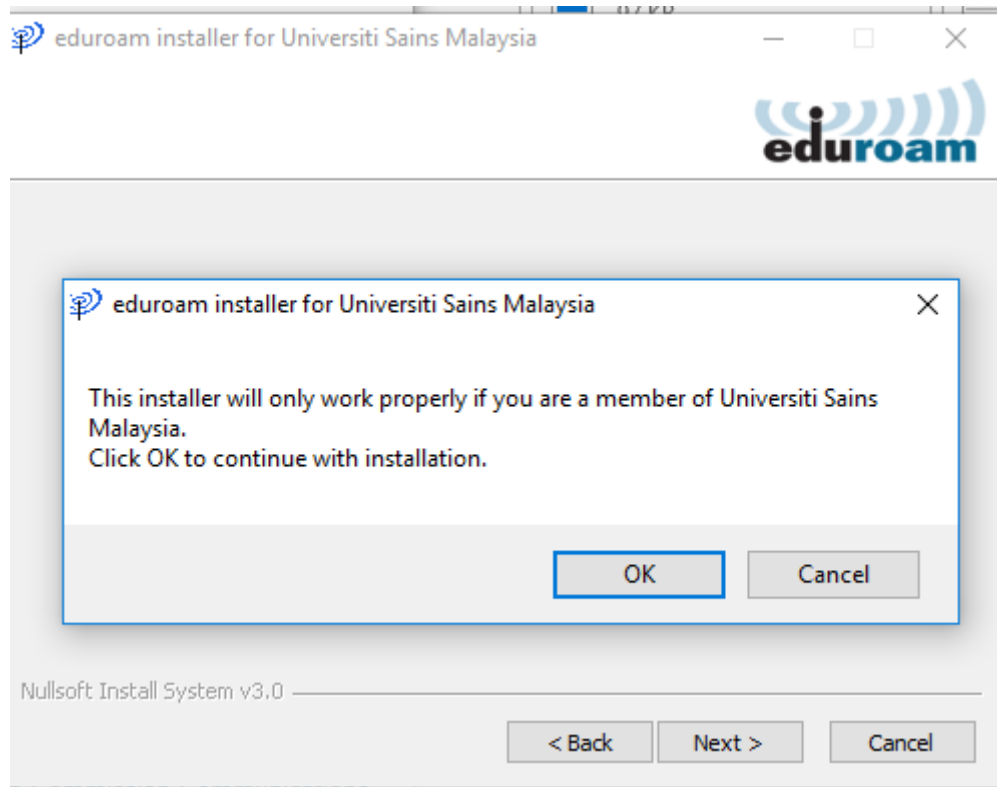


Figure 7

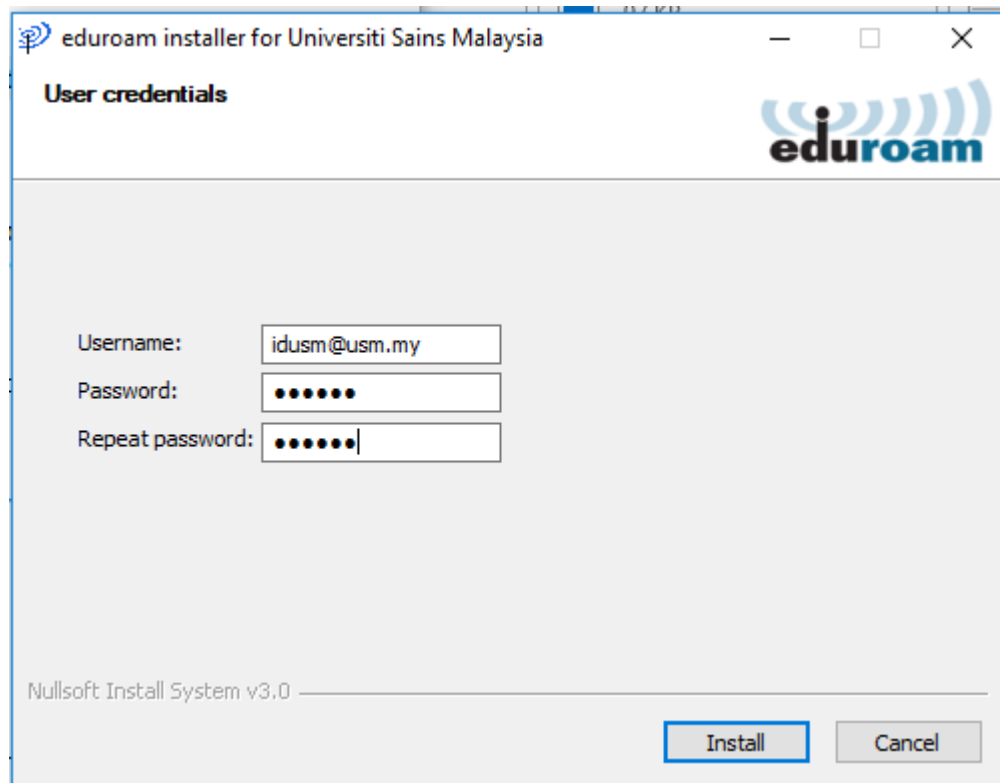


Figure 8

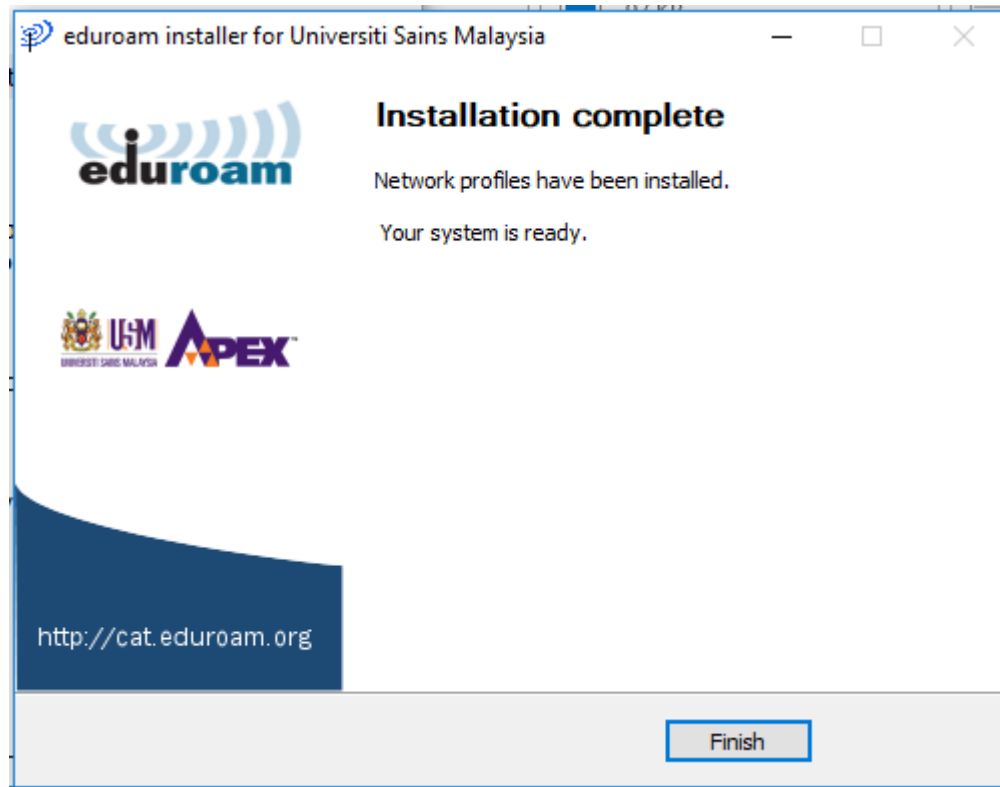


Figure 9

10. Once all required configuration and certificates installed in your computer, the **Installation complete** screen will be prompted to you. Click finish button.
11. You are now ready to connect to wireless eduroam.

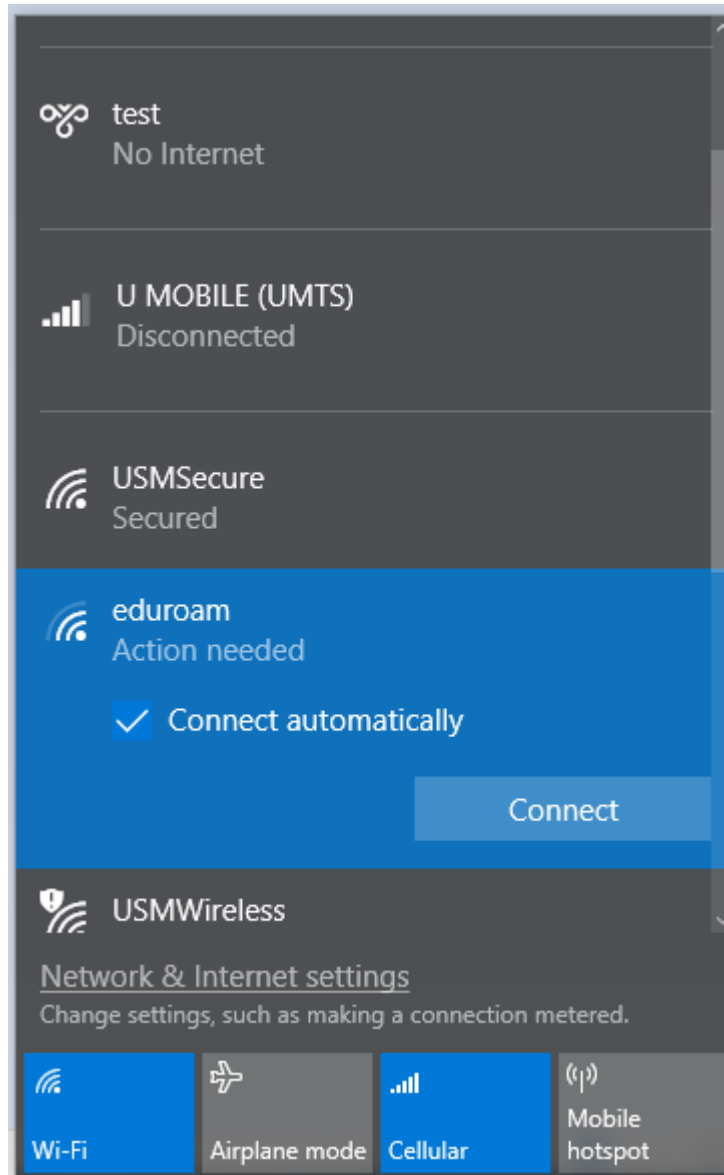


Figure 10

--- Thank you ---